

PFA Lined Bottom Ball Valve

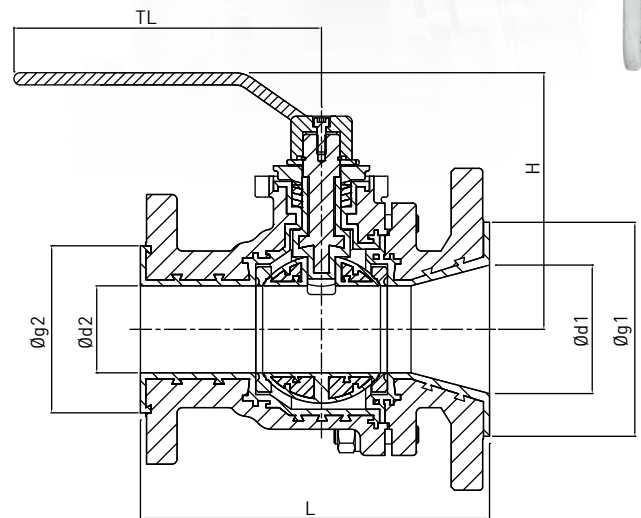


MATERIALS OF CONSTRUCTION

| No. | Description | Materials | |
|-----|-------------|--------------------------|----------------------------|
| | | Stainless steel | Carbon steel |
| 1 | Body/Cap | 13A/CF8/1.4308 PFA Lined | SCPH2/WCB/1.0619 PFA Lined |
| 2 | Ball | SCS13A PFA Lined | |
| 3 | Stem | SCS14A PFA Lined | |

TECHNICAL DATA

| | |
|--------------------|---|
| Size(mm) (inch) | 50AX25A, 50AX40A, 80AX50A, 100AX80A, 150AX100A 2"X1", 2"X1 1/2", 3"X2", 4"X3", 6"X4" |
| Temperature | -30°C ~ 150°C |
| Flange | JIS10K, ANSI150lbs, DIN PN16 |



DIMENSION TABLE

| DN SIZE | | | L(mm) | | | H (mm) | TL (mm) | Ød(mm) | | Øg(mm) | | Weight (kg) |
|-----------|-----------|-------------|--------|----------|---------|-----------|------------|--------|-----|--------|-----|----------------|
| JIS10K | ANSI150# | DINPN16 | JIS10K | ANSI150# | DINPN16 | | | Ød1 | Ød2 | Øg1 | Øg2 | |
| 50AX25A | 2"X1" | DN50XDN25 | 150 | 127 | 150 | 110 | 170 | 50 | 25 | 95 | 60 | 5.5 |
| 50AX40A | 2"X1 1/2" | DN50XDN40 | 168 | 157 | 168 | 124 | 200 | 50 | 36 | 95 | 73 | 8 |
| 80AX50A | 3"X2" | DN80XDN50 | 203 | 178 | 203 | 142 | 250 | 75 | 50 | 123 | 95 | 13 |
| 100AX80A | 4"X3" | DN100XDN80 | 225 | 203 | 225 | 170 | 280 | 100 | 75 | 147 | 123 | 21 |
| 150AX100A | 6"X4" | DN150XDN100 | 245 | 220 | 245 | 200 | 280 | 141 | 94 | 210 | 147 | 34 |