

www.skyvalve.co.kr

Change And Impression

SKY 

K2N to further brighten your business
Be with K2N, right now

PFA Lined Ball Valve

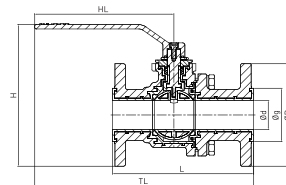


MATERIALS OF CONSTRUCTION

| No. | Description | Materials | |
|-----|-------------|---------------------------|-----------------------------------|
| | | Stainless steel | Carbon steel |
| 1 | Body/cap | SCS13A/A351 CF8 PFA lined | SCPH2/A216 WCB/A356 D.1 PFA lined |
| 2 | Ball | SCS13A/A351 CF8 PFA lined | SCS13A/A351 CF8 PFA lined |
| 3 | Stem | SCS13A/A351 CF8 PFA lined | SCS13A/A351 CF8 PFA lined |

TECHNICAL DATA

| | |
|--------------------|--|
| Size(mm) (inch) | 15A, 20A, 25A, 32A, 40A, 50A, 65A, 80A, 100A, 150A 1/2", 3/4", 1", 1 1/4", 1 1/2", 2", 3", 4", 6" |
| Temperature | -30°C ~ 150°C |
| Flange | JIS10K, ANSI150lbs, DIN PN16 |



DIMENSION TABLE

| DN SIZE | | | L(mm) | | | HL | TL(mm) | | | Ød(mm) | | | Øg(mm) | | | ØD(mm) | | | H | Weight |
|---------|----------|--------|--------|----------|--------|------|--------|----------|--------|--------|----------|--------|--------|----------|--------|--------|----------|--------|-------|--------|
| JIS10K | ANSI150# | DNPN16 | JIS10K | ANSI150# | DNPN16 | (mm) | JIS10K | ANSI150# | DNPN16 | JIS10K | ANSI150# | DNPN16 | JIS10K | ANSI150# | DNPN16 | JIS10K | ANSI150# | DNPN16 | (mm) | (kg) |
| 15A | 1/2" | DN15 | 140 | 127 | 140 | 120 | 197 | 186 | 197 | 20 | 20 | 20 | 52 | 49 | 52 | 95 | 89 | 98 | 158.5 | 3.7 |
| 20A | 3/4" | DN20 | 152 | 127 | 152 | 120 | 202 | 192 | 202 | 20 | 20 | 20 | 52 | 49 | 52 | 100 | 98.5 | 105 | 158.5 | 3.7 |
| 25A | 1" | DN25 | 165 | 127 | 165 | 165 | 252 | 242 | 252 | 25 | 25 | 25 | 60 | 51 | 60 | 125 | 108 | 115 | 172.5 | 4.8 |
| 32A | 1-1/4" | DN32 | 178 | 165 | 178 | 190 | 299 | 283 | 299 | 36 | 36 | 36 | 74 | 70 | 74 | 135 | 117 | 140 | 190 | 7 |
| 40A | 1-1/2" | DN40 | 191 | 165 | 191 | 190 | 299 | 283 | 299 | 36 | 36 | 36 | 79 | 70 | 79 | 140 | 127 | 150 | 193.5 | 7.7 |
| 50A | 2" | DN50 | 216 | 178 | 216 | 230 | 342 | 329 | 342 | 50 | 50 | 50 | 95 | 95 | 95 | 155 | 152 | 165 | 226 | 12.7 |
| 65A | 2-1/2" | DN65 | 240 | 203 | 240 | 260 | 395 | 393 | 395 | 64 | 70 | 64 | 112 | 112 | 112 | 175 | 178 | 185 | 257 | 18.5 |
| 80A | 3" | DN80 | 250 | 203 | 283 | 280 | 420 | 393 | 420 | 74 | 70 | 74 | 128 | 128 | 123 | 185 | 191 | 200 | 267 | 19.7 |
| 100A | 4" | DN100 | 280 | 229 | 305 | 300 | 440 | 413 | 440 | 92 | 92 | 92 | 147 | 147 | 147 | 210 | 229 | 220 | 314.5 | 33.8 |
| 150A | 6" | DN150 | 267 | 267 | 267 | - | - | - | - | 138 | 138 | 138 | 210 | 210 | 210 | 280 | 279 | 285 | - | 88.5 |

PFA Lined Diaphragm Valve

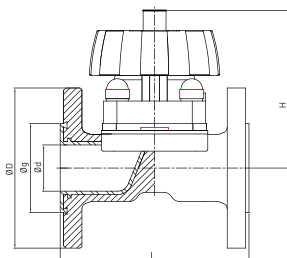


MATERIALS OF CONSTRUCTION

| No. | Description | Materials | |
|-----|------------------|---------------------------|--------------------------|
| | | Stainless steel | Carbon steel |
| 1 | Body/cap | SCS13A/A351 CF8 PFA lined | SCPH2/A216 WCB PFA lined |
| 2 | Diaphragm sheet | PTFE | |
| 3 | Diaphragm rubber | EPDM | |

TECHNICAL DATA

| | |
|--------------------|---|
| Size(mm) (inch) | 15A, 20A, 25A, 40A, 50A, 65A, 80A, 100A 1/2", 3/4"1", 1 1/2", 2", 3", 4" |
| Temperature | -30°C ~ 100°C |
| Flange | JIS10K, ANSI150lbs, DIN PN16 |



DIMENSION TABLE

| DN SIZE | | | L(mm) | | ØD(mm) | | | Ød(mm) | Øg(mm) | | | H(mm) | Weight (kg) |
|---------|----------|----------|----------|-----|--------|----------|----------|--------|--------|----------|----------|-------|----------------|
| JIS10K | ANSI150# | DIN PN16 | STANDARD | ISO | JIS10K | ANSI150# | DIN PN16 | | JIS10K | ANSI150# | DIN PN16 | | |
| 15A | 1/2" | DN15 | 123 | 130 | 95 | 89 | 95 | 20 | 52 | 49 | 45 | 154 | 2.5 |
| 20A | 3/4" | DN20 | 123 | 150 | 100 | 98,5 | 105 | 20 | 52 | 49 | 52 | 154 | 2.5 |
| 25A | 1" | DN25 | 132 | 160 | 125 | 108 | 115 | 25 | 60 | 51 | 60 | 170 | 3,6 |
| 40A | 1 1/2" | DN40 | 165 | 200 | 140 | 127 | 150 | 40 | 79 | 70 | 79 | 208 | 6,2 |
| 50A | 2" | DN50 | 197 | 230 | 155 | 152,5 | 165 | 50 | 95 | 95 | 95 | 232 | 8,2 |
| 65A | 2 1/2" | DN65 | 222 | 290 | 175 | 178 | 185 | 63 | 103 | 103 | 103 | 258 | 19 |
| 80A | 3" | DN80 | 260 | 310 | 185 | 191 | 200 | 76 | 125 | 127 | 125 | 258 | 21,5 |
| 100A | 4" | DN100 | 313 | 350 | 210 | 229 | 220 | 96 | 145 | 162 | 145 | 274 | 32 |

PFA Lined Ball Check Valve

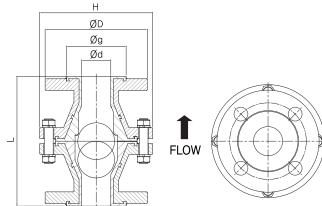


MATERIALS OF CONSTRUCTION

| No. | Description | Materials | |
|-----|-------------|---------------------------|--------------------------|
| | | Stainless steel | Carbon steel |
| 1 | Body/cap | SCS13A/A351 CF8 PFA lined | SCPH2/A216 WCB PFA lined |
| 2 | Ball | PTFE | |
| 3 | Bolt/Nut | SUS 304 | |

TECHNICAL DATA

| | |
|--------------------|--|
| Size(mm) (inch) | 15A, 20A, 25A, 40A, 50A, 65A, 80A, 100A, 150A 1/2, 3/4, 1, 1 1/2, 2, 2 1/2, 3, 4, 6 |
| Temperature | -30°C ~ 120°C |
| Flange | JIS10K / ANSH150lbs, DIN PN16 |
| Ball | solid PTFE |



DIMENSION TABLE

| DN SIZE | | | L(mm) | D(mm) | | | Øg(mm) | | H(mm) | Cv |
|---------|---------|---------|-------|--------|---------|--------|--------|---------|-------|------|
| JIS10K | ANS150# | DINPN16 | | JIS10K | ANS150# | Ød(mm) | JIS10K | ANS150# | | |
| 15A | 1/2" | DN15 | 152 | 95 | 89 | 15 | 43 | 41 | 120 | 10 |
| 20A | 3/4" | DN20 | 152 | 100 | 98.5 | 20 | 55 | 46 | 120 | 11 |
| 25A | 1" | DN25 | 152 | 125 | 108 | 25 | 65 | 57 | 130 | 14 |
| 40A | 1 1/2" | DN40 | 178 | 140 | 127 | 40 | 79 | 75 | 155 | 42 |
| 50A | 2" | DN50 | 203 | 155 | 152.5 | 50 | 95 | 95 | 180 | 110 |
| 65A | 2 1/2" | DN65 | 228 | 175 | 178 | 65 | 115 | 115 | 203 | 205 |
| 80A | 3" | DN80 | 241 | 185 | 190.5 | 80 | 125 | 125 | 225 | 260 |
| 100A | 4" | DN100 | 292 | 210 | 228 | 100 | 147 | 147 | 293 | 515 |
| 150A | 6" | DN150 | 356 | 250 | 280 | 150 | 210 | 210 | 350 | 1050 |

PFA Lined Bottom Ball Valve

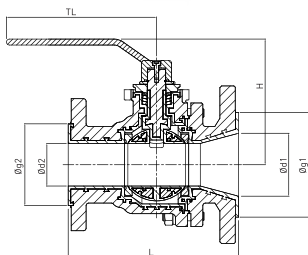


MATERIALS OF CONSTRUCTION

| No. | Description | Materials | |
|-----|-------------|---------------------------|-----------------------------------|
| | | Stainless steel | Carbon steel |
| 1 | Body/cap | SCS13A/A351 CF8 PFA lined | SCPH2/A216 WCB/A395 D J PFA lined |
| 2 | Ball | SCS13A/A351 CF8 PFA lined | SCS13A/A351 CF8 PFA lined |
| 3 | Stem | SCS13A/A351 CF8 PFA lined | SCS13A/A351 CF8 PFA lined |

TECHNICAL DATA

| | |
|--------------------|---|
| Size(mm) (inch) | 50A X 25A, 50A X 40A, 80A X 50A, 100A X 80A, 150A X 100A 2" X 1", 2" X 1 1/2", 3" X 2", 4" X 3", 6" X 4" |
| Temperature | -30°C ~ 150°C |
| Flange | JIS10K, ANSI150lbs, DIN PN16 |



DIMENSION TABLE

| DN SIZE | | | L(mm) | | | H (mm) | TL (mm) | Ød(mm) | | Øg(mm) | | Weight (kg) |
|-----------|-----------|-------------|--------|----------|---------|-----------|------------|--------|-----|--------|-----|----------------|
| JIS10K | ANSI150# | DINPN16 | JIS10K | ANSI150# | DINPN16 | | | Ød1 | Ød2 | Øg1 | Øg2 | |
| 50AX25A | 2"X1" | DN50XDN25 | 150 | 125 | 150 | 110 | 170 | 50 | 25 | 95 | 60 | 5.5 |
| 50AX40A | 2"X1 1/2" | DN50XDN40 | 168 | 157 | 168 | 124 | 200 | 50 | 36 | 95 | 73 | 8 |
| 80AX50A | 3"X2" | DN80XDN50 | 203 | 178 | 203 | 142 | 250 | 75 | 50 | 123 | 95 | 13 |
| 100AX80A | 4"X3" | DN100XDN80 | 225 | 203 | 225 | 170 | 280 | 100 | 75 | 147 | 123 | 21 |
| 150AX100A | 6"X4" | DN150XDN100 | 245 | 220 | 245 | 200 | 280 | 141 | 94 | 210 | 147 | 34 |

PFA Lined Bottom Flush Valve

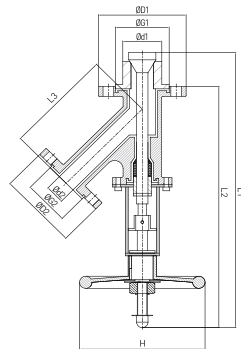


MATERIALS OF CONSTRUCTION

| No. | Description | Materials |
|-----|-------------------------|---------------------------|
| 1 | Body | SCS13A/A351 CF8 PFA LINED |
| 2 | STEM & DISC (one piece) | SCS13A PFA LINED |
| 3 | FRAME | SUS304 |
| 4 | BUSH | COOPER |
| 5 | GLAND | SUS304 |
| 6 | V-Packing | PTFE |
| 7 | Hand wheel | Aluminum |
| 8 | Bolt & Nut | SUS304 |

TECHNICAL DATA

| | |
|--------------------|--|
| Size(mm) (inch) | 80A X 65A, 80A X 50A, 50A X 40A, 50A X 25A 3" X 2 1/2", 3" X 2", 2" X 1 1/2", 2" X 1" |
| Temperature | -30°C ~ 120°C |
| Flange | JIS10K / ANSI150lbs, DIN PN16 |



DIMENSION TABLE

| DN SIZE | | | L1 (mm) | L2 (mm) | L3 (mm) | ØD1 (mm) | ØD2 (mm) | ØG1 (mm) | ØG2 (mm) | Ød1 (mm) | Ød2 (mm) | H (mm) |
|-----------|-----------|-------------|------------|------------|------------|-------------|-------------|-------------|-------------|-------------|-------------|-----------|
| JIS10K | ANSI150# | DINPN16 | | | | | | | | | | |
| 50A X 25A | 2"X1" | DN50 X DN25 | 500 | 438 | 190.5 | 155 | 125 | 95 | 65 | 69 | 34 | 222 |
| 50A X 40A | 2"X1 1/2" | DN50 X DN40 | 500 | 438 | 190.5 | 155 | 140 | 95 | 80 | 69 | 34 | 222 |
| 80A X 50A | 3"X2" | DN80 X DN50 | 600 | 528 | 269.5 | 185 | 155 | 120 | 95 | 90 | 48 | 247 |
| 80A X 65A | 3"X2 1/2" | DN80 X DN65 | 600 | 528 | 269.5 | 185 | 175 | 120 | 112 | 90 | 48 | 247 |

Lined Pipe & Fittings



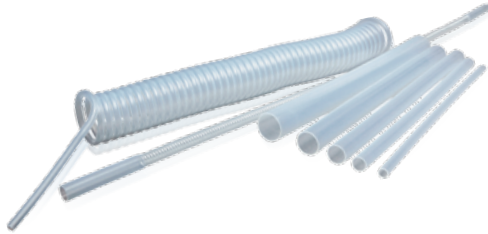
LINING MATERIAL PROPERTIES TABLE

| | ITEM | TEST METHOD | UNIT | PFA | PTFE | FEP | ETFE |
|------------|--|-----------------|-------------------------|-------------------|-------------------|-------------------|-------------------|
| | | ASTM | | | | | |
| PHYSICAL | SPECIFIC GRAVITY | D792 | - | 2.12-2.17 | 2.13-2.20 | 2.15-2.17 | 1.73-1.74 |
| | MELTING POINT | - | °C | 310 | 327 | 260 | 270 |
| MECHANICAL | TENSILE STRENGTH | D638 | MPa | 25-35 | 20-35 | 20-30 | 38-42 |
| | TENSILE ELONGATION PERCENTAGE | D638 | % | 300-350 | 200-400 | 250-300 | 300-400 |
| | COMPRESSION STRENGTH | D695 | MPa | 15-20 | 10-15 | 14-19 | 40-50 |
| | HARDNESS | D2240 | - | 60-64 | 54-58 | 55-65 | 75 |
| | KINETIC FRICTION COEFFICIENT | 0.69MPa, 3m/min | | | 0.2 | 0.1 | 0.3 |
| THERMAL | HIGHEST TEMPERATURE FOR CONTINUOUS USE | - | °C | 260 | 260 | 200 | 150 |
| | HEAT DISTORTION TEMPERATURE | D648 | °C | 47 | 55 | 50 | 74 |
| | LINEAR EXPANSION COEFFICIENT | D696 | 10 ⁻⁶ (-5)°C | 12 | 10 | 9 | 6 |
| ELECTRICAL | VOLUME RESISTIVITY | D257 | Ω-cm | >10 ¹⁸ | >10 ¹⁸ | >10 ¹⁸ | >10 ¹⁷ |
| | BREAK DOWN VOLTAGE | D149 | MV/m | 20 | 19 | 22 | 16 |
| | DIELECTRIC CONSTANT | D150 | - | 2.1 | 2.1 | 2.1 | 2.6 |
| | DIELECTRIC LOSS TANGENT | D150 | - | 0.0003 | 0.0002 | 0.0005 | 0.005 |

LINING PIPE
90° ELBOW
45° ELBOW
EQUAL TEE
REDUCING TEE
REDUCER
INSTRUMENT TEE

CROSS
REDUCING FLANGE
BLIND FLANGE
SPACER
SIGHT GLASS

PFA Tube



DIMENSION TABLE

| PRODUCT | SIZE | O.D (mm) | O.D TOLERANCE (mm) | WALL THICKNESS (mm) | WALL TOLERANCE (mm) | LENGTH (m) |
|---------|--------|-------------|-----------------------|------------------------|------------------------|---------------|
| TUBE | 1/4" | 6,35 | ±0,1 | 1,194 | ±0,1 | 100 |
| | 3/8" | 9,53 | ±0,1 | 1,574 | ±0,1 | 100 |
| | 1/2" | 12,7 | ±0,12 | 1,574 | ±0,1 | 100 |
| | 3/4" | 19,05 | ±0,12 | 1,574 | ±0,1 | 100 |
| | 1" | 25,4 | ±0,20 | 1,574 | ±0,1 | 100 |
| | 1 1/2" | 40 | ±0,25 | 2,184 | ±0,15 | 100 |
| PIPE | 1/2" | 21,34 | ±0,13 | 2,768 | ±0,25 | 3 |
| | 3/4" | 26,67 | ±0,25 | 2,87 | ±0,25 | 3 |
| | 1" | 33,4 | ±0,38 | 3,378 | ±0,38 | 3 |
| | 1 1/2" | 50,5 | ±0,51 | 3,37 | ±0,38 | 3 |
| | 2" | 60,33 | ±0,51 | 3,911 | ±0,38 | 3 |

| PRODUCT | SIZE | O.D (mm) | O.D TOLERANCE (mm) | WALL THICKNESS (mm) | WALL TOLERANCE (mm) | LENGTH (m) |
|---------|------|-------------|-----------------------|------------------------|------------------------|---------------|
| TUBE | Ø6 | 6 | ±0,1 | 1 | ±0,1 | 100 |
| | Ø8 | 8 | ±0,1 | 1 | ±0,1 | 100 |
| | Ø10 | 10 | ±0,12 | 1 | ±0,12 | 100 |
| | Ø12 | 12 | ±0,12 | 1 | ±0,12 | 100 |

Lined Butterfly Valve

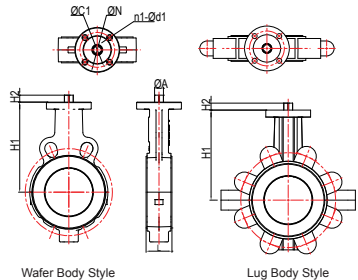


MATERIALS OF CONSTRUCTION

| No. | Description | Material | |
|-----|-------------|---------------------------|-----------------------------------|
| | | Stainless steel | Carbon steel |
| 1 | Body | SCS13A/A351 CF8 PFA lined | SCPH2/A216 WCB/ A395 D1 PFA lined |
| 2 | DISC | A351 CF8M PFA lined | |
| 3 | LINER | PTFE | |
| 4 | STEM | SUS316 | |
| 5 | O-RING | FKM | |
| 6 | PUSHER | SUS304 | |
| 7 | BELLEVILLE | 2CR13 | |
| 8 | BEARING | SUS304 + PTFE | |

TECHNICAL DATA

| | |
|---------------------|----------------------------|
| Size (mm) (inch) | 40A ~ 400A 1-1/2B ~ 16B |
| Temperature | -40°C ~ 150°C |



DIMENSION TABLE

| SIZE | | L | H1 | | H2 | øA | ISO5211 | øN | n1-ed1 |
|-------|-----|-----|-------|-----|------|-------|---------|-----|-----------|
| INCH | DN | | Water | Lug | | | | | |
| 1-1/2 | 40 | 33 | 100 | 100 | 14.5 | 9 | F05 | 65 | 4-8 |
| 2 | 50 | 43 | 110 | 110 | 14.5 | 11 | F05 | 65 | 4-8 |
| 2-1/2 | 65 | 46 | 125 | 125 | 14.5 | 11 | F05 | 65 | 4-8 |
| 3 | 80 | 46 | 132 | 136 | 14.5 | 11 | F05 | 65 | 4-8 |
| 4 | 100 | 52 | 147 | 151 | 20 | 14 | F07 | 90 | 4-10 |
| 5 | 125 | 56 | 170 | 170 | 22 | 17 | F07 | 90 | 4-10 |
| 6 | 150 | 56 | 190 | 190 | 22 | 17 | F07 | 90 | 4-10 |
| 8 | 200 | 60 | 222 | 222 | 28 | 19/22 | F07/F10 | 125 | 4-10/4-12 |
| 10 | 250 | 68 | 270 | 270 | 28 | 22 | F10 | 125 | 4-12 |
| 12 | 300 | 78 | 290 | 290 | 28 | 22 | F10/F12 | 150 | 4-12/4-14 |
| 14 | 350 | 78 | 325 | 325 | 35 | 27 | F12 | 150 | 4-14 |
| 16 | 400 | 102 | 342 | 342 | 45 | 36 | F14 | 175 | 4-18 |

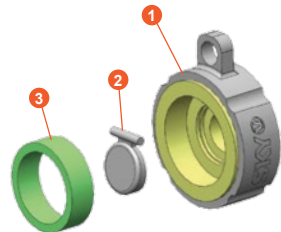
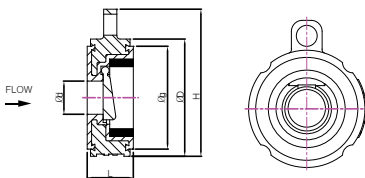
PFA Lined Swing Check Valve



| SIZE | Description | Material |
|------|-------------|-------------------------------|
| ① | BODY | SCS13A, CF8, SCPH2, WCB + PFA |
| ② | DISC | PFA(SCS13A + PFA) |
| ③ | PTFE SEAL | PTFE |

Testing / Marking

- Pressure – and tightness testing acc. to EN 12266–1, leakage rate A, resp. API 598.
- Marking of vales on body and name plate acc. to EN 19.
- Material – resp. test certificates acc. to EN 10204 – 3.1/2.2/2.1



| SIZE | | L | øD | øg | ød | H |
|------|--------|----|-----|-----|-----|-----|
| 40A | 1 1/2" | 33 | 87 | 77 | 23 | 111 |
| 50A | 2" | 43 | 106 | 93 | 30 | 133 |
| 65A | 2 1/2" | 46 | 130 | 116 | 45 | 156 |
| 80A | 3" | 46 | 140 | 127 | 55 | 166 |
| 100A | 4" | 52 | 170 | 148 | 72 | 205 |
| 125A | 5" | 56 | 200 | 180 | 105 | 228 |
| 150A | 6" | 56 | 235 | 204 | 119 | 263 |
| 200A | 8" | 60 | 284 | 260 | 155 | 320 |
| 250A | 10" | 68 | 338 | 316 | 190 | 392 |
| 300A | 12" | 78 | 416 | 366 | 240 | 456 |